

# Career Opportunities

## Master of East Asian Management



An MBA degree is considered the most valuable post graduate degree in the world and has exciting and rewarding worldwide career prospects.

The EAM MBA will further your career with your current employer, or enable

you to step into better jobs.

The main field of occupation for successful graduates is at the interface between Germany and/or Europe and the Asian markets. Graduates will primarily work in jobs where technical expertise and management competency with a focus on Asia are necessary.

As a graduate, you will also be part of a network of successful graduates holding key management and leadership positions world-wide.

 Your Gateway to Asia



# Admission and Tuition fees

## Master of East Asian Management

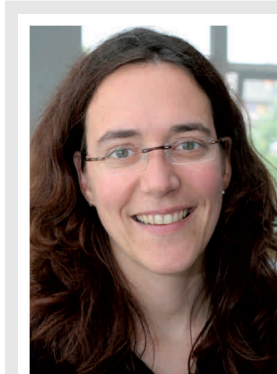
The tuition fee covers the entire program including all study materials and school services. Tuition is to be paid in two instalments at the beginning of each academic year.

Admission requirements:

- Resume or CV
- A written essay describing your motivation
- Proof of university or comparable degree
- Proof of proficiency in oral and written English
- A completed EAM application form (download at [www.eam.graduatecenter.de](http://www.eam.graduatecenter.de))

# Contact

For more information on our MBA please contact:



**Tatjana Erlewein**  
Course Coordinator

International Graduate Center  
Süderstraße 2 - 28199 Bremen  
Tel: + 49-421-5905-4010  
Fax: + 49-421-5905-4097  
[tatjana.erlewein@hs-bremen.de](mailto:tatjana.erlewein@hs-bremen.de)

[www.eam.graduatecenter.de](http://www.eam.graduatecenter.de)



## MBA "East Asian Management" (EAM)

### Prepare your next step with a part-time MBA

The EAM is a unique MBA program for executives with a non-economic background. The program is designed to equip graduates with a professional management expertise focussing on **China, India, Japan or Korea**.



# Welcome

## Master of East Asian Management



The “Master of East Asian Management” (EAM) is a unique executive MBA program that is designed to equip graduates with professional Asia-focused management expertise.

The program perfectly suits working professionals because

it allows for the possibility of attending the courses while working full-time.

Asia’s rapid development in the last decades has led to an increase in complexity in respect to doing business in the region. Because of this, the need for professionals with both technical expertise and an in-depth understanding of conducting business in Asia is growing.

EAM prepares you for senior management and leadership positions at the interface between Europe and the prospering Asian markets.

Distinguishing features of the program are its innovative learning methods, weekend seminars with interactive classes, committed top-level faculty, and a rigorous admission policy.

I am sure that our program will help you to pave the way for a rewarding career and personal fulfilment. If you are up to the challenge, I invite you to apply for our EAM program!

Prof. Dr. Tim Goydke  
Course Director

# Curriculum

## Master of East Asian Management

Sem.	Module 1	Module 2	Module 3	
1	<b>Introduction to International Management</b> <ul style="list-style-type: none"> <li>Strategic and International Management</li> <li>International Marketing</li> </ul>	<b>People and Management<sup>2</sup></b> <ul style="list-style-type: none"> <li>Cross-cultural Management</li> <li>International Human Resource Management</li> </ul>	<b>Area and Language Studies<sup>1</sup></b> <ul style="list-style-type: none"> <li>Culture and Society</li> <li>Language Training</li> </ul>	
2	<b>Business Environment</b> <ul style="list-style-type: none"> <li>Economics for Business and Research Methods</li> <li>Global Economics</li> </ul>	<b>Finance and Management</b> <ul style="list-style-type: none"> <li>International Finance</li> <li>Cost Management</li> </ul>	<b>Area and Language Studies<sup>1,2</sup></b> <ul style="list-style-type: none"> <li>Economy and Business</li> <li>Language Training</li> </ul>	
3	<b>International Business Law and Taxes</b> <ul style="list-style-type: none"> <li>International Business Law and Ethics</li> <li>International Taxation</li> </ul>	<b>International Operations and Project Management<sup>2</sup></b> <ul style="list-style-type: none"> <li>Operations Management</li> <li>Project Management</li> </ul>	<b>Area and Language Studies<sup>1</sup></b> <ul style="list-style-type: none"> <li>Management</li> <li>Language Training</li> </ul>	
4	<b>Master’s Thesis (30 Credits)</b>		<b>Master Seminar</b>	<b>Area and Language Studies<sup>1,2</sup></b> <ul style="list-style-type: none"> <li>Case Studies</li> <li>Language Training</li> </ul>

1) Elective module with focus either on China, Japan, Korea, or India 2) Blended-learning module

The program consists of six modules with 60 contact hours and 4 modules with 10 contact hours (blended-learning modules) each, reflecting a workload of 6 credits for every module in accordance with the ECTS (European Credit Transfer System).

Classes are held on Friday evenings, Saturdays and Sundays with approximately every second weekend off.

The EAM curriculum consists of two main components:

1. **Core courses** in international management, economics and quantitative methods, cross-cultural and human resource management, finance, operations and project management, law and taxation.

2. **Mandatory elective courses** in area studies and language training either with focus on China, India, Japan, or Korea. Students are expected to choose one country as their focus upon their application to the program.

The language training in Chinese, Japanese, and Korean is organized as a mix of two three-week compact language courses and distant-learning modules. Hindi is taught by in-house staff in Bremen through both in-class and distant-learning courses.